

Instruction Manual

Stainless lift table



NOTE:

- Do not use the lifting table before reading and understanding these operating instructions.
- Keep for future reference.

FORWORD

Before operating the lifting table, read this ORIGINAL INSTRUCTION HANDBOOK carefully and understand the usage of the lifting table completely. Improper operation could create danger
Keep this handbook for future reference

ATTENTION:

- Environmentally hazardous waste, sure as oil, will have a negative effect on the Environment or health if handled incorrectly
- The waste packages should be sorted and put into solid dustbins and be collected disposal by local special environment protection bureau to avoid pollution it's forbidden to throw away the wastes randomly
- To avoid leaking during the use of the products , the user should prepare some absorbable materials (scraps of wooden or dry duster cloth)to absorb the leaking oil in time .To avoid second pollution to the environment, the used absorbable materials should be handed in to special departments in terms of local authorities
- Our products are subject to ongoing developments. Because this handbook is only for the purpose of operating/maintaining the lifting table, therefore please have

Understanding, that there is no guarantee out of particular features out of this handbook



NOTE: On this manual, the left sign means warning and danger, which can lead to death or serious injury if not followed

Copyright

The copyright remains with the company, mentioned on the CE-certificate at the end of this document.

TABLE OF CONTENTS

1. CORRECT APPLICATION.....3

2. DESCRIPTION OF THE LIFTING TABLE.....4

3. WARNINGS AND SAFETY INSTRUCTIONS.....5

4. DAILY INSPECTION.....6

5. OPERATING INSTRUCTIONS.....6

 a. How to Use the Brake.....6

 b. Lifting the Table.....7

 c. Lowering the Table.....7

 d. Moving.....7

6. SPECIFICATIONS.....8

7. SERVICE INSTRUCTIONS.....8

8. HYDRAULIC CIRCUIT.....9

9. PART LIST OF TABLE10

10. PART LIST OF PUMP.....12

1. CORRECT APPLICATION

It is only allowed to use this lifting table according to this instruction handbook.

This table is a mobile lifting table designed to lift or lower a clearly defined load the lift category is 2.

Do not use this table for other purpose than its intended use. A wrong usage can cause human injuries or can damage equipment. The operator/the operating company has to ensure the correct usage and has to ensure, that this table is used only by staff, which is trained and authorized to use this table.

The table has to be used on substantially firm, smooth, level and prepared surfaces. Driving with the load lifted is not allowed. The load must be placed approximately on the longitudinal plate. The operator has to consider the warnings and safety instructions

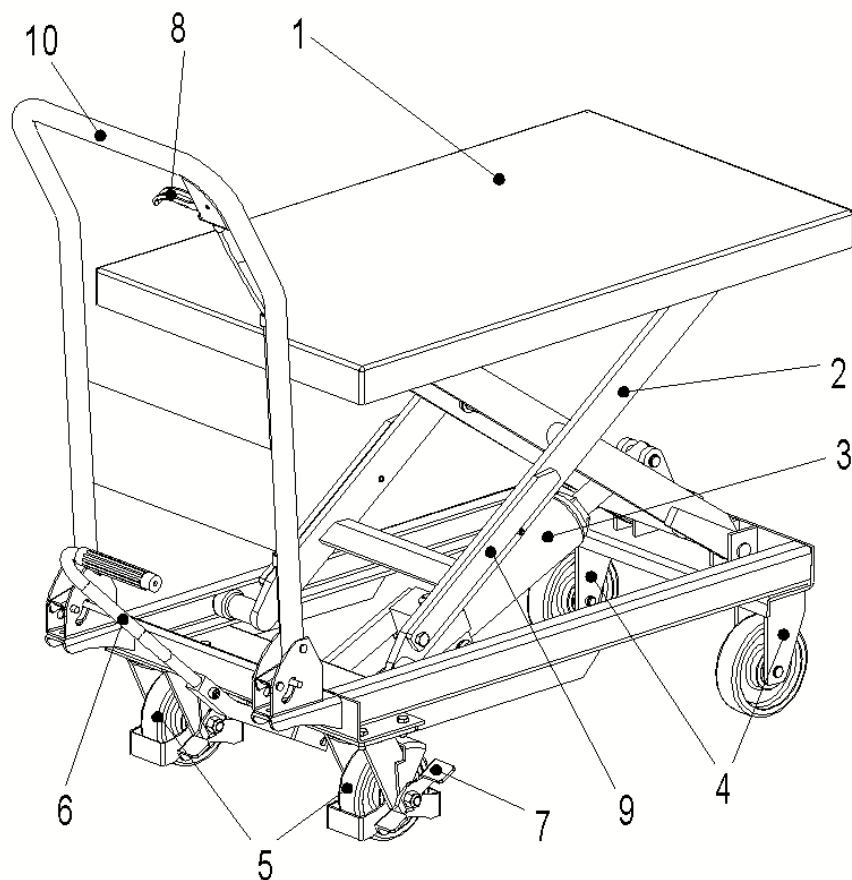
The table is intended to be used for indoor applications with ambient temperatures between +5°C and +40°C

Modification

No modifications or alterations to this lifting table which may affect, for example, capacity, stability or safety requirement of the truck, shall be made without the prior written approval of the original truck manufacturer, its authorized representative, or a successor thereof. This includes changes affecting, for example braking, steering, visibility and the addition of removable attachments. When the manufacturer or its successor approve a modification or alteration, they shall also make and approve appropriate changes to capacity plate, decals, tags and operation and maintenance handbooks

By not observing these instructions, the warranty becomes void.

2. DESCRIPTION OF THE LIFTING TABLE



- 1 loading platform
- 2 Lift mechanism
- 3 Hydraulic cylinder
- 4 Castors
- 5 Steering castors

- 6 Foot pedal
- 7 Parking brake
- 8 Lowering lever
- 9 Safety mechanism
- 10 Pushing/pulling bracket

3. WARNINGS AND SAFETY INSTRUCTIONS



DO NOT

- Put foot or hand in scissors lifting mechanism.
- Allow other person than the operator to stand in front of or behind the table when it is moving or lifting/lowering.
- Move the table when table is in raised position. Load could fall down.
- Enter under table.
- Overload lift table.
- Put foot in front of rolling wheels, Injury could result.
- Use the table on a slope or inclined surface, the table may become uncontrollable and create danger.
- Lift people. People could fall down and suffer severe injury.

Watch difference in floor level when moving the lifter. Load could fall down or the lifting table could get uncontrollable.



DO NOT

- Lower table too fast. Load could fall down and create danger. Lower speed controller is available for safety purpose.
- Side or end load. Load must be distributed on at least 80% of table area.
- Use table with unstable, unbalanced loosely stacked load.
- Use table without manufacturer's written consent

Keep watching the condition of load. Stop operating table is load becomes unstable. Brake table with the parking brake (7) when sliding load on or off table. Practice maintenance work according to regular inspection. This table is not designed to be water resistant. Use table under dry condition. Stop operation is temperature of hydraulic oil is too high.

4. DAILY INSPECTION

This chapter describes pre-shift checks before putting the truck into operation. Daily inspection is effective to find the malfunction or fault on this table. Check table on the following points before operation. Remove load from table and when servicing, please use the safety mechanism (9) to prevent table from lowering.

DO NOT USE THE TABLE IF ANY MALFUNCTION OR FAULT IS FOUND.

HYDRAULIC LEAKAGE CAN CAUSE MALFUNCTIONS AND LOSS IN THE LIFTING FUNCTION.

- ◇ Check for scratch, bending or cracking on the lift table.
- ◇ Check if there is any oil leakage from the cylinder.
- ◇ Check the vertical creep of the table.
- ◇ Check the smooth movement of the wheels.
- ◇ Check the function of brake.
- ◇ Check if all the bolts and nuts are tightened firmly.
- ◇ Check the lifting and lowering conditions by shifting the knob.

5. OPERATING INSTRUCTIONS

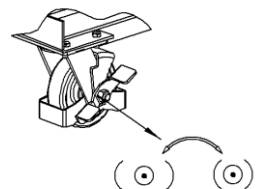
a. How to Use the Brake



CAUTION! Brake the lift table when not moving it in order to avoid sudden movement.

The brake(7) is equipped with the swivel caster on the right side.

- ◇ Brake the wheel, press the brake pedal (7).
- ◇ Releasing the brake, lift up the brake pedal (7).



b. Lifting the Table



Warning! Do not overload the lift table.

Ensure the balance of loading. Do not side or end load on the table. Load must be contributed on at least 80% of table area.

The hydraulic unit is designed to hold the table. The table should not stay at a lifting position for a long time.

- ◇ Press the lifting pedal several times until the table reaches any desired position.
- ◇ The table does not elevate after reaching the highest position even though the lifting pedal is pressed.
- ◇ The table lowers slightly after reaching the highest position.

c. Lowering the Table



Warning!

- ◇ Do not put foot or hand in scissors mechanism.
- ◇ Do not lower table with load too fast and stop suddenly. Impact load could be created and table could be damaged.
- ◇ Lower the load by pulling the lowering lever (8) carefully until the desired or lowest position is reached.

d. Moving



DO NOT

- ◇ Move the table on a slope or inclined surface. Lifting table may become uncontrollable and create.
- ◇ Allow other person stand in front of or behind table when it is moving.
- ◇ Move table when table is in raised position. Load could fall down.
- ◇ Put foot in front of rolling wheels. Injury could result.
- ◇ Move the table is the visibility is insufficient.
- ◇ Watch difference of floor level when moving lifter. Load could fall down.

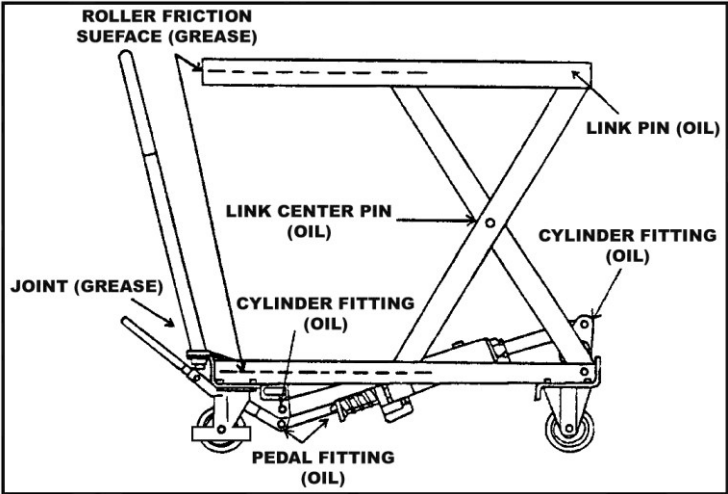
- ◇ Make the load stable to prevent it from falling down.
- ◇ Lower the table down before moving.
- ◇ Release the brake (7) and move the table by pushing or pulling the handle.
- ◇ Keep watching the condition of load. Stop operating the table if load becomes unstable.

6. SPECIFICATIONS

Model	Capacity (kg)	Table (mm)	Table Height (mm)	L×W×H (mm)	Wheel (mm) Φ	Weight (kg)
BSS50-304	500	1010×520	442-910	1270×520×1100	125	123
BSS50-316	500	1010×520	442-910	1270×520×1100	125	123

7. SERVICE INSTRUCTIONS

- Lubricate each point described below every month.

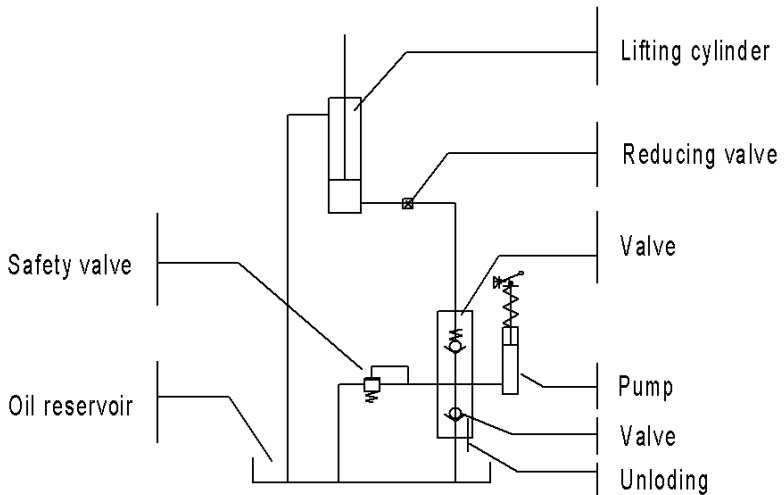


- Change hydraulic oil every year.

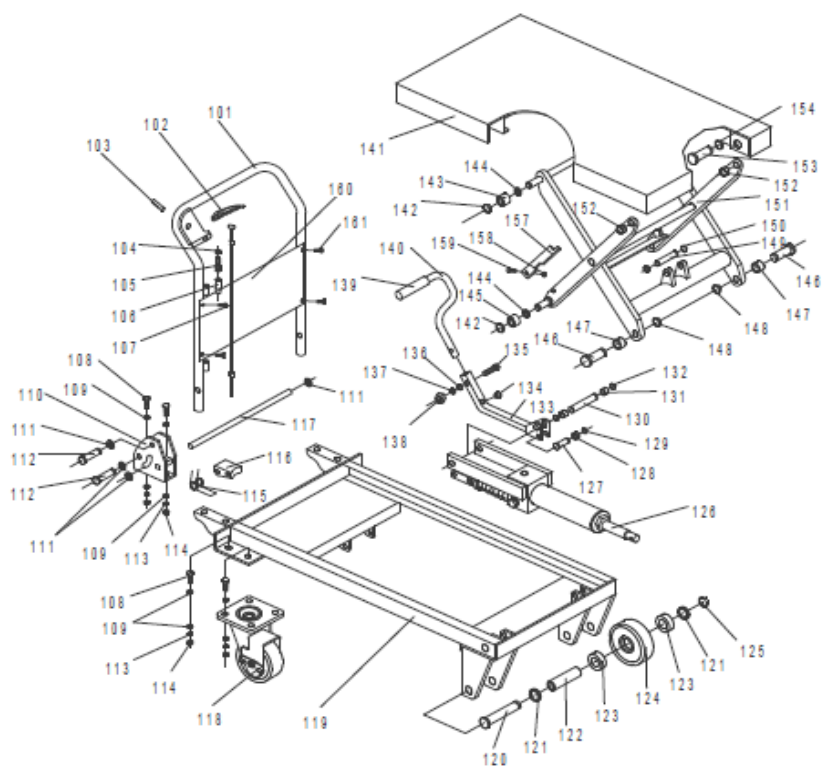
Lubricating Points

- (1) Fitting of Cylinder Oil
- (2) Roller Friction Surface Grease
- (3) Link Pin Oil
- (4) Pedal Fitting Point Oil
- (5) Link Centre Pin Oil
- (6) Joint Grease
- (7) Grease Nipple Grease

8. HYDRAULIC CIRCUIT

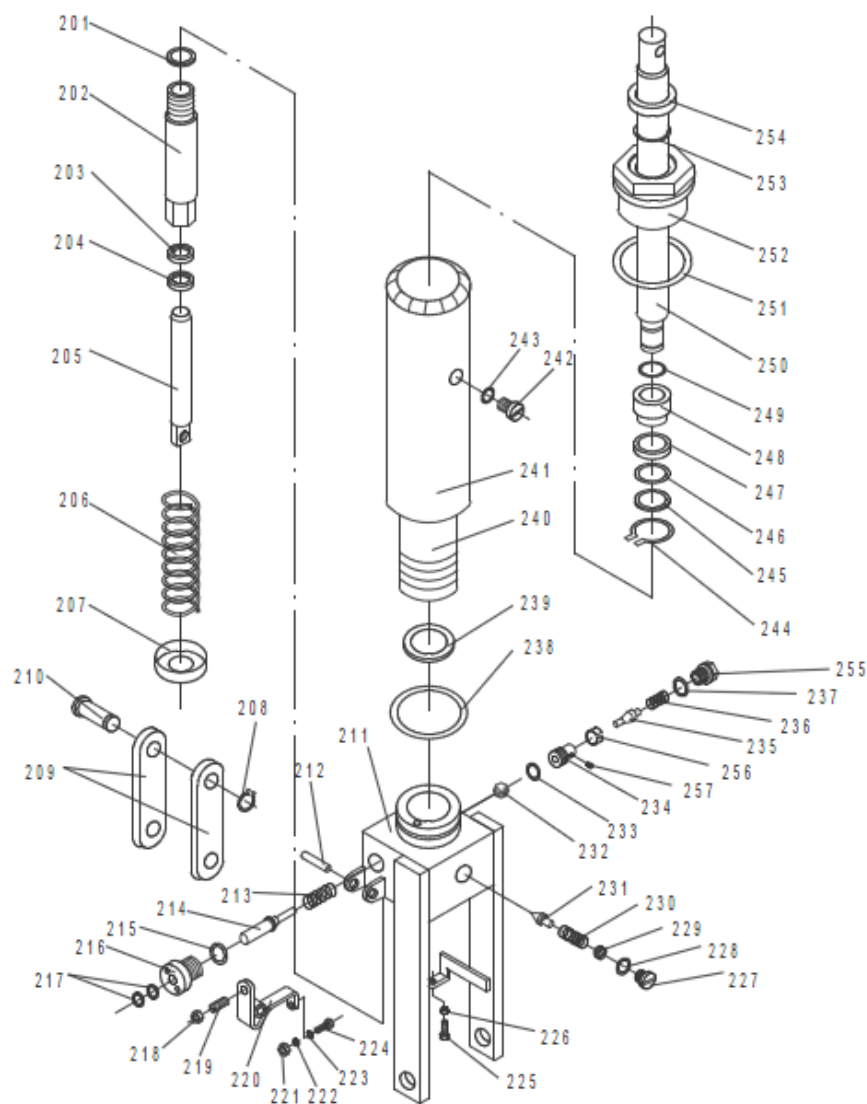


9. PART LIST OF TABLE



NO.	DESCRIPTION	Qty	NO.	DESCRIPTION	Qty
101	Handle Grip	1	133	Connecting Rod	1
102	Control Handle	1	134	Cushion	1
103	Elastic Pin	1	135	Bolt	1
104	Nut	1	136	Washer	1
105	Bolt with Hole	1	137	Elastic Washer	1
106	Jacket	1	138	Nut	1
107	Pull Rod	1	139	Protecting Cover	1
108	Bolt	12	140	Pedal Bar	1
109	Washer	12	141	Table	1
110	Seat of Grip	2	142	Retaining Ring	4
111	Retaining Ring	6	143	Roller	2
112	Pin	4	144	Washer	4
113	Elastic Washer	12	145	Roller	2
114	Nut	12	146	Pin	2
115	Spring	2	147	Bushing	2
116	Cushion	2	148	Retaining Ring	2
118	Universal Wheel	2	149	Pin	1
119	Frame	1	150	Retaining Ring	2
120	Pin	2	151	Fork Arm	1
121	Washer	4	152	Bushing	2
122	Axle	2	153	Pin	2
123	Bearing	4	154	Retaining Ring	2
124	Wheel	2	157	Support Plank	2
125	Retaining Ring	2	158	Nut	2
126	Pump Unit	1	159	Screw	2
127	Pin	1	160	Protecting Board	1
128	Washer	1	161	Bolt	4
129	Retaining Ring	1	162	Bushing	2
130	Pin	1	117	Long Shaft	1
131	Washer	2			
132	Retaining Ring	2			

10. PART LIST OF PUMP



NO.	DESCRIPTION	Qty	NO.	DESCRIPTION	Qty
201	Seal Washer	1	233	O- Ring	1
202	Pump Cylinder	1	234	Seat of Pumping Valve	1
203	Dust Ring	1	235	Spindle of Pumping Valve	1
204	Y- Seal	1	236	Spring	1
205	Pump Piston	1	237	Seal Washer	1
206	Spring	1	238	O- Ring	1
207	Spring Cap	1	239	Seal Washer	2
208	Retaining Ring	1	240	Cylinder	1
209	Joint Plate	2	241	Housing	1
210	Pin	1	242	Bolt	1
211	Pump Body	1	243	Seal Washer	1
212	Elastic Pin	1	244	Retaining Ring	1
213	Spring	1	245	Washer	1
214	Strike Pin	1	246	O- Ring	1
215	Seal Washer	1	247	Cup Packing	1
216	Axle Sleeve	1	248	Piston	1
218	Nut	1	249	O- Ring	1
219	Screw	1	250	Piston Rod	1
220	Lever Plate	1	251	Seal Washer	1
221	Nut	1	252	Cylinder Cap	1
222	Elastic Washer	1	253	O- Ring	1
223	Washer	1	254	Dust Ring	1
224	Bolt with Hole	1	255	Plug	1
225	Bolt with Hole	1	256	Liquid Throttle Sheath	1
226	Nut	1	257	Bolt	1
227	Plug	1	217	O- Ring	2
228	O- Ring	1			
229	Adjusting Bolt	1			
230	Spring	1			
231	Spindle of Safety Valve	1			
232	Steel Ball	1			